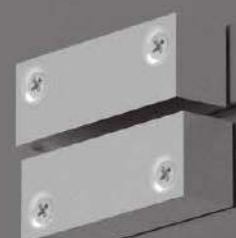


# SERIES CM

## MAGNETIC CONTACTS

Keeping an eye on your doors and windows

These are reed switches made out of two ferrous contacts. When approached by a magnetic field they close the circuit. Used to detect the status of the doors and windows, magnetic contacts are generally attached to access control systems like fire alarms and indicator lights.



The installation is straightforward: the reed switch is connected to the door or window frame and the magnet to the leaf.

### Reed contact characteristics

Max Voltage: 200 V DC
Max. Current: 500 mA
Max. Power 10 VA
Initial resistance to contact $R = 0,1 \Omega$
Isolation Resistance: $R = 10^{12} \Omega$
Temperature -40°C / 125°C
Mean time between failures (MTBF): $10^8$

**E**  
Embedded



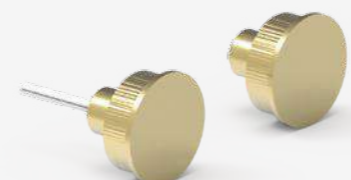
CMI002



CMI016



CMI122  
Operating distance: 20 mm  
10 mm (on iron surfaces)



CMI130  
Operating distance: 20 mm  
10 mm (on iron surfaces)

**S**  
Surface



CME045  
Temperature: -10°C / 40°C



CMC005



CMB003



CMB020

	Material	Distance	Reed	Magnet	Grade 2	* Grade 3
<b>E</b>	<b>CMI002</b>	Brass	12 mm	29,5 x 7,5 Ø	27,5 x 7,5 Ø	Complies with EN50131 - 2 - 6 <b>Grade 2</b> Class 4
	<b>CMI016 *</b>	ABS	15 mm	29,5 x 7,5 Ø	29 x 7,5 Ø	
	<b>CMI122 *</b>	ABS	20 / 10 mm	29 x 20 Ø	29 x 20 Ø	
	<b>CMI130</b>	Brass	20 / 10 mm	18 x 20 Ø	18 x 20 Ø	
<b>S</b>	<b>CME045 *</b>	Plastic (colors)	25 - 40 mm	56 x 16 x 5	56 x 16 x 5	Complies with <b>Grade 3</b> on request: CMI016 CMI122 CME045 CMC005
	<b>CMC005 *</b>	Aluminium	25 / 18 mm	58 x 15 x 20	58 x 15 x 20	
	<b>CMB003</b>	Plastic with glass	25 / 18 mm	85 x 38 x 13	50 x 26 x 25	
	<b>CMB020</b>	Aluminium	35 / 30 mm	130 x 42 x 15	98 x 30 x 25	