

SERIES 7 WATERPROOF!

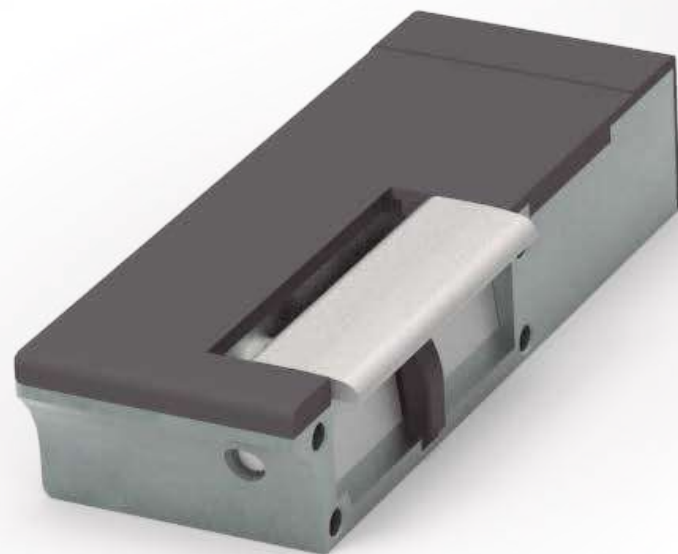
Enjoying the outdoors

Sometimes electric strikes are subjected to sudden weather changes which may affect their internal mechanism.

In order to isolate this internal mechanism we have developed an external keeper for the box and an independent electrical connection, resulting in a waterproof electric strike able to withstand heavy rain.

IP54*

*IP54 protection against dust and pulverized water on an average of 10 liters per minute and pressure of 80-100kN/m2.

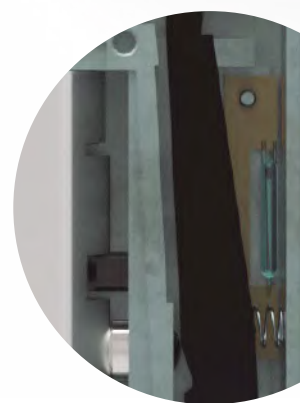
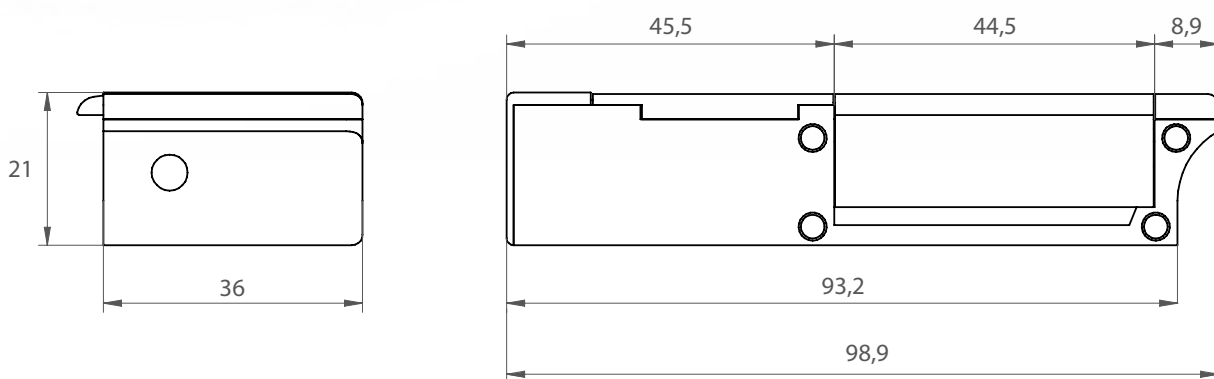


Technical characteristics

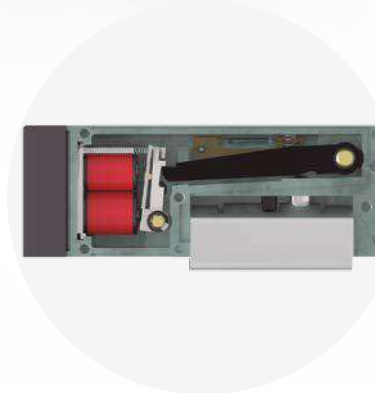
Break-in resistance (keeper's pressure)	3.500 N
Endurance rating <input type="checkbox"/> (cycles with no side-load)	200.000
Endurance rating <input checked="" type="checkbox"/> (cycles with 120 N side-load AC)	100.000
Temperature	- 25 °C to + 70 °C
Complies with the directive:	2014/30/UE 2011/65/UE

According to EN 14846 standard

Fail-secure:	3W100L000
Fail-safe:	3C100L000
Fail-secure with micro:	3W100L010
Fail-safe with micro:	3C100L010



WATER TIGHTNESS TEST
We have isolated the inside of the mechanism to prevent corrosion. The electric strike has been certified with the IP54 protection against dust and water.



MAGNETIC MICROSWITCH
A hidden magnetic sensor allows us to know the status of the door and keep water and dust away from the internal mechanism.



GOOD FOR MULTIPoint BOLT LOCKS
The design of the mechanism box is curved so the end matches the first bolt lock.

NEW ITEM NUMBERS (EXAMPLE)

Model	Function	Coil	Keeper	Cover
7R	0	L	4	0

ITEM NUMBERS AND FEATURES

Functions

7 DIN R

7 DIN L

0. Fail-secure



7R0D40
7R0L40
7R0M40
7R0N40
7R0P40

7L0D40
7L0L40
7L0M40
7L0N40
7L0P40

4. Fail-safe



7R4M40
7R4N40
7R4P40

7L4M40
7L4N40
7L4P40

6. Fail-secure with monitoring



7R6D40
7R6L40
7R6M40
7R6N40
7R6P40

7L6D40
7L6L40
7L6M40
7L6N40
7L6P40

8. Fail-safe with monitoring



7R8M40
7R8N40
7R8P40

7L8M40
7L8N40
7L8P40

A. Internal hold-open



7RAD40
7RAL40
7RAP40

7LAD40
7LAL40
7LAP40



Important
Install the electric strike so that the coil is positioned at the top.

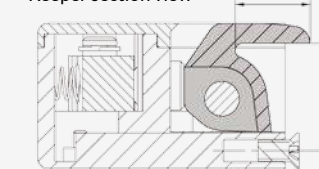
Coils

Electrical characteristics

	D	L	M	N	P
Electrical data	24V AC	8-14V AC/DC	12V DC	24V DC	12V DC
Continuous duty	< 1 min	< 1 min	ED 100%	ED 100%	ED 100%
Transient Voltage Suppressor (TVS)	-	-	Si	Si	Si
Rated resistance	70 Ω	20 Ω	70 Ω	240 Ω	54 Ω
Current consumption AC	0,24 A	0,28 A 8V 0,42 A 12V 0,49 A 14V	-	-	-
Current consumption DC (stabilized)	-	0,4 A 8V 0,6 A 12V 0,7 A 14V	0,17 A	0,1 A	0,22 A
Maximum side-load on AC	120 N	12V - 120 N	-	-	-
Maximum side-load on DC (stabilized)	-	12V - 10 N	10 N	10 N	10 N

Our special Keepers and Covers ensures the best fitting possible

Keeper section view



Dimension X
Keeper depth

Dimension Y
Keeper's adjustability
from minimum
to maximum

Section view

Keeper

4

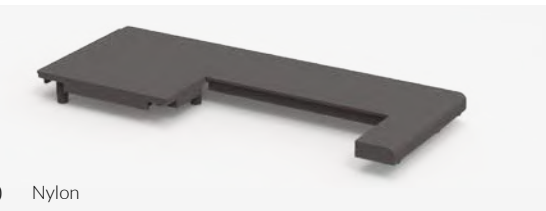


Fixed keeper
made of zamak

X= 8,8 mm
Y= 12,8 mm

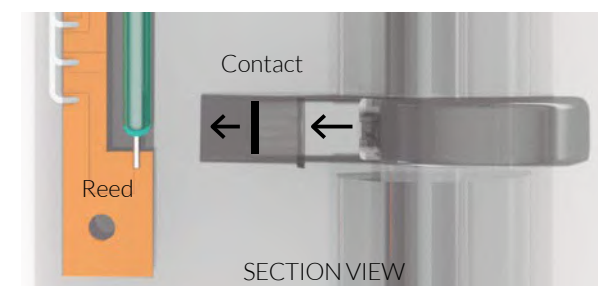
Cover

0 Nylon



Reed

The Reed is a sensor that detects and monitors the door's position. The microswitch activates magnetically, thus avoiding the need to perforate the box. Watertightness assured!



CHARACTERISTICS

- Maximum switching voltage: 100 V DC
- Maximum switching current: 300 mA DC
- Maximum power load: 3 W